

**Anti-MOUSE IgG (H&L) (Alkaline Phosphatase Conjugated) Secondary Antibody**  
**Goat Polyclonal, Alkaline Phosphatase (Calf Intestine)**  
**Catalog # ASR2197****Specification****Anti-MOUSE IgG (H&L) (Alkaline Phosphatase Conjugated) Secondary Antibody - Product Information**

Description	<b>Anti-MOUSE IgG (H&amp;L) (GOAT) Antibody</b>
Host	<b>Alkaline Phosphatase Conjugated</b>
Conjugate	<b>Goat</b>
Target Species	<b>Alkaline Phosphatase (Calf Intestine)</b>
Clonality	<b>Mouse</b>
Application	<b>Polyclonal</b>
Application Note	<b>WB, E, IC</b>
	<b>ELISA 1:15,000;Western Blot</b>
	<b>1:1,000-1:4,000;Immunochemistry</b>
	<b>1:200-1:1,000</b>
Physical State	<b>Liquid (sterile filtered)</b>
Host Isotype	<b>IgG</b>
Target Isotype	<b>IgG (H&amp;L)</b>
Buffer	<b>0.05 M Tris Chloride, 0.15M Sodium Chloride, 0.001M Magnesium Chloride, 0.0001M Zinc Chloride, 50% (v/v) Glycerol; pH 8.0</b>
Immunogen	<b>Mouse IgG whole molecule</b>
Stabilizer	<b>10 mg/mL Bovine Serum Albumin (BSA) - Immunoglobulin and Protease free</b>
Preservative	<b>0.1% (w/v) Sodium Azide</b>

**Anti-MOUSE IgG (H&L) (Alkaline Phosphatase Conjugated) Secondary Antibody - Additional Information****Shipping Condition**

Wet Ice

**Purity**

Anti-Mouse Conjugated Secondary Antibody was prepared from monospecific antiserum by immunoaffinity chromatography using Mouse IgG coupled to agarose beads followed by solid phase adsorption(s) to remove any unwanted reactivities. Assay by immunoelectrophoresis resulted in a single precipitin arc against anti-Alkaline Phosphatase (calf intestine), anti-Goat Serum, Mouse IgG and Mouse Serum.

**Storage Condition**

Store secondary antibody conjugate at 4° C before opening. DO NOT FREEZE. This product is stable at 4° C as an undiluted liquid. Dilute only prior to immediate use. Freezing alkaline phosphatase conjugates will result in a substantial loss of enzymatic activity.

**Precautions Note**

This product is for research use only and is not intended for therapeutic or diagnostic applications.

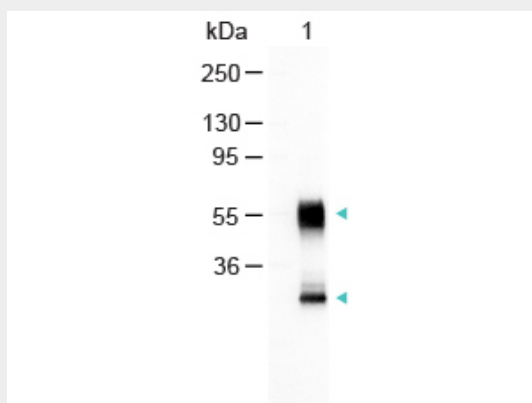
## **Anti-MOUSE IgG (H&L) (Alkaline Phosphatase Conjugated) Secondary Antibody - Protein Information**

## **Anti-MOUSE IgG (H&L) (Alkaline Phosphatase Conjugated) Secondary Antibody - Protocols**

Provided below are standard protocols that you may find useful for product applications.

- [Western Blot](#)
- [Blocking Peptides](#)
- [Dot Blot](#)
- [Immunohistochemistry](#)
- [Immunofluorescence](#)
- [Immunoprecipitation](#)
- [Flow Cytometry](#)
- [Cell Culture](#)

## **Anti-MOUSE IgG (H&L) (Alkaline Phosphatase Conjugated) Secondary Antibody - Images**



Western Blot of Alkaline Phosphatase Conjugated Goat Anti-Mouse IgG Antibody Lane 1: Mouse IgG Load: 100 ng per lane Secondary antibody: Alkaline Phosphatase Conjugated Goat Anti-Mouse IgG Antibody at 1:1000 for 60 min at RT Block: MB-070 for 30 min RT Predicted/Observed size: 55 and 28 kDa, 55 and 28 kDa

## **Anti-MOUSE IgG (H&L) (Alkaline Phosphatase Conjugated) Secondary Antibody - Background**

Mouse secondary antibody conjugated to Alkaline Phosphatase is available in a variety of formats. Anti IgG secondary antibody conjugate is suitable for ELISA, Immunohistochemistry, Western Blotting as well as other Alkaline Phosphatase antibody based assays.